

**Réseau de recherche appliquée sur la santé
des francophones de l'Ontario
[Network for Applied Research on the
Health of Francophones in Ontario]**

Louise Bouchard, PhD
Marie-Hélène Chomienne, MD, MSc

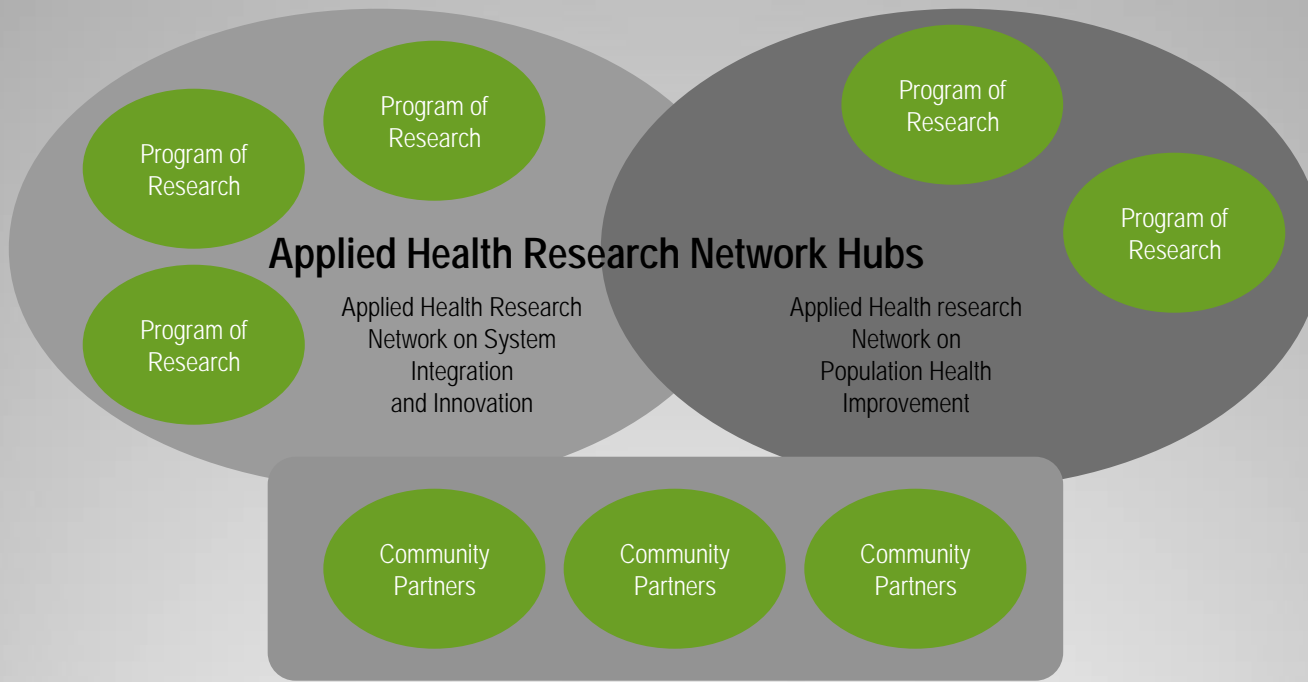
Colloque scientifique sur la santé
des communautés de langue officielle
en situation minoritaire du Canada
[Science Colloquium on the Health of Canada's
Official Language Minority Communities]

November 5-6, 2009



uOttawa.ca

MOHLTC-AHRNI Structure

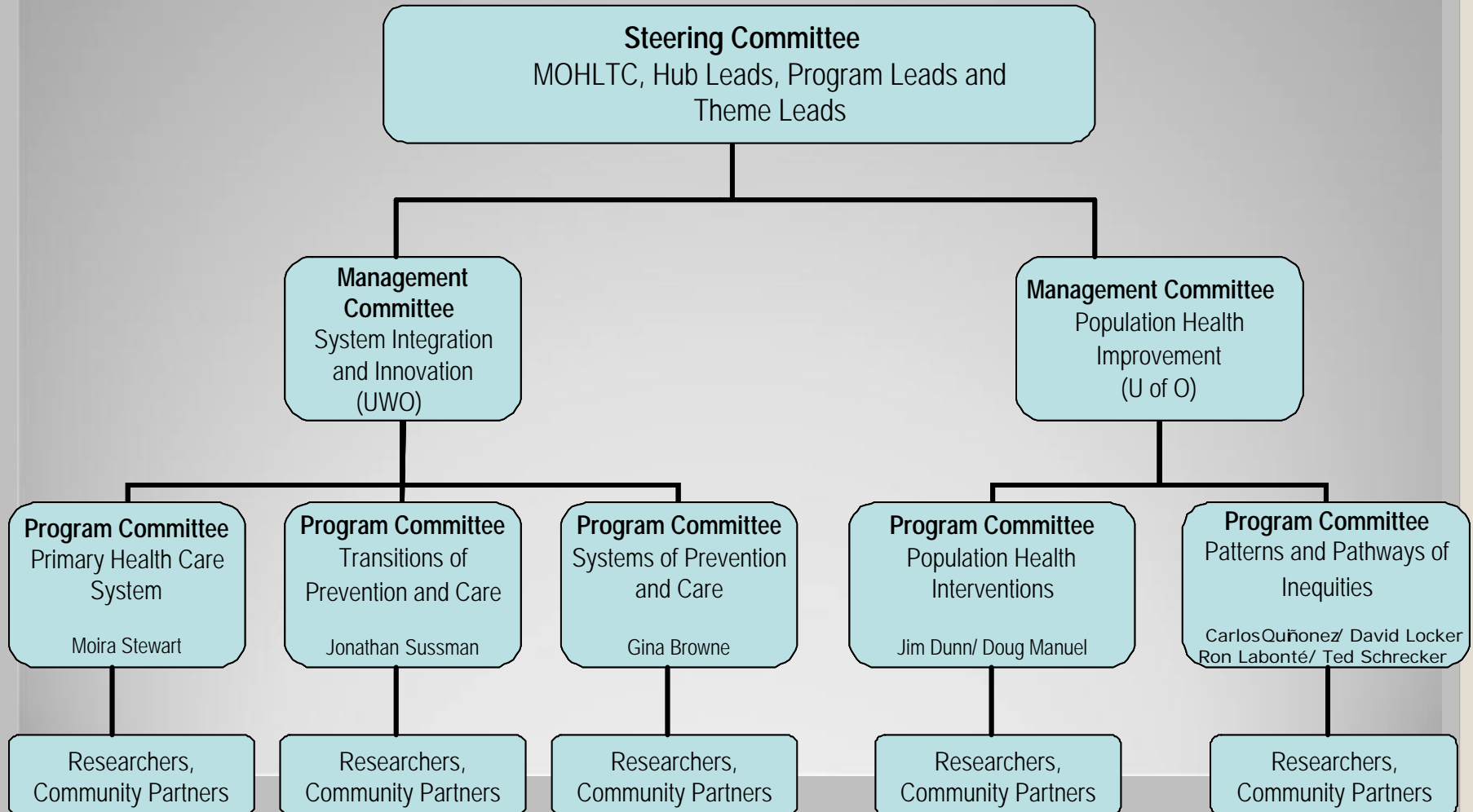


Human resources

Francophone Team

Performance Measurement & Multi-Cultural Health

The AHRNI program will be governed by a cascading structure that ensures a strong link with the ministry and health system, and also between the hubs and programs of research



Areas: Health of Ontario Francophones

- Modelling a health information system on the basis of linguistic variables.
- Knowledge and observation of health and its determinants.
- Knowledge and observation of health professionals providing services in French.
- Knowledge of specific health and health services needs.
- Prevalence of priority physical and mental health problems.
- Primary care organization models adapted to Francophone communities.
- Interprofessional collaboration for management of chronic disease.
- Language concordance and its impact on health.
- Study of supply of and demand for services in French.
- Measuring the performance of the health system and health policies on the basis of access to services, availability of Francophone professionals and integration of services.

RRASFO

Approaches:

- Interdisciplinary approach (medicine, epidemiology, sociology, psychology, anthropology, management, geography, systems analysis).
- Partnership approach (University of Ottawa, Laurentian University, Glendon College, Ottawa Public Health, LHIN, Alliance des réseaux ontariens de santé en français, MOH, Public Health Agency of Canada, Health Canada).
- Integrated and innovative approach (contextual analysis of health, ecological and systemic analysis, integrated bio-neuro-physio-psycho-social research, geographic information system, interprofessional and interinstitutional collaboration).
- Mixed methodology approach (cross-sectional and longitudinal population survey, CCHS, SVOLM secondary studies..., mapping the determinants of health, multilevel analysis, network analysis, case study, concept mapping, focus group, interviews, minority/majority language index, equity index for access to services).

RRASFO

Challenges:

- Develop applied research capacity, taking the specific needs of Ontario's Francophone population into consideration in a population approach.
- Develop validated research, decision-making and health promotion tools that reflect the language preferences of the Francophone population.
- Allow for the training of young researchers in a Francophone research environment.
- Promote the development and excellence of health researchers in Ontario's Francophone communities.
- Develop an innovative model for creation of links among researchers, outcomes of applied research, practitioners and policy makers, as well as the Francophone community.
- Ensure the impact of the research through development of effective information networks that reflect the local reality, and through research outreach days.

RRASFO